



# ON-Q Catheter Placement Technique

*This material is provided for educational purposes and represents the technique used by the following surgeon. Catheter placement is provided for guidance only and subject to the individual expertise, experience and school-of-thought of the surgeon placing the catheter. This protocol is not to be construed as I-Flow's specific recommendation.*

## Rotator Cuff Repair

**Jan Fronek, M.D.**  
Orthopedic Surgeon  
Head of Sports Medicine  
Green Hospital/  
Scripps Clinic  
◆  
La Jolla, CA

### Protocol

- Pump Used:** PM012: 100 ml x 2 ml/hr
- Drugs in Pump:** 100 ml of 1% lidocaine plain
- Pre-Incision Infiltration:** 10 ml of 0.25% bupivacaine plain. Aspirate before injection to avoid intra-venous or intra-arterial injection.
- Catheter Placement:** Placed anteriorly in the subacromial space. Arthroscopically confirm the position of the catheter. Tighten all connections and then inject 1-3 ml of 1% lidocaine plain to ensure patency of the catheter.
- Bolus Technique:** A 25 ml bolus of 0.25% bupivacaine plain is injected into the subacromial space through the arthroscopy portals.
- Catheter Securement Technique:**  
Catheter is secured with 3 wound closure strips and is coiled under an occlusive dressing.
- Additional Post-Op Pain Medications:** Vicodin
- Other Notes:** The catheter is removed either in physical therapy or at home by a family member - as instructed during the pre-operative teaching program.

### Other Notes cont'd:

Tape flow restrictor to skin, away from ice packs.

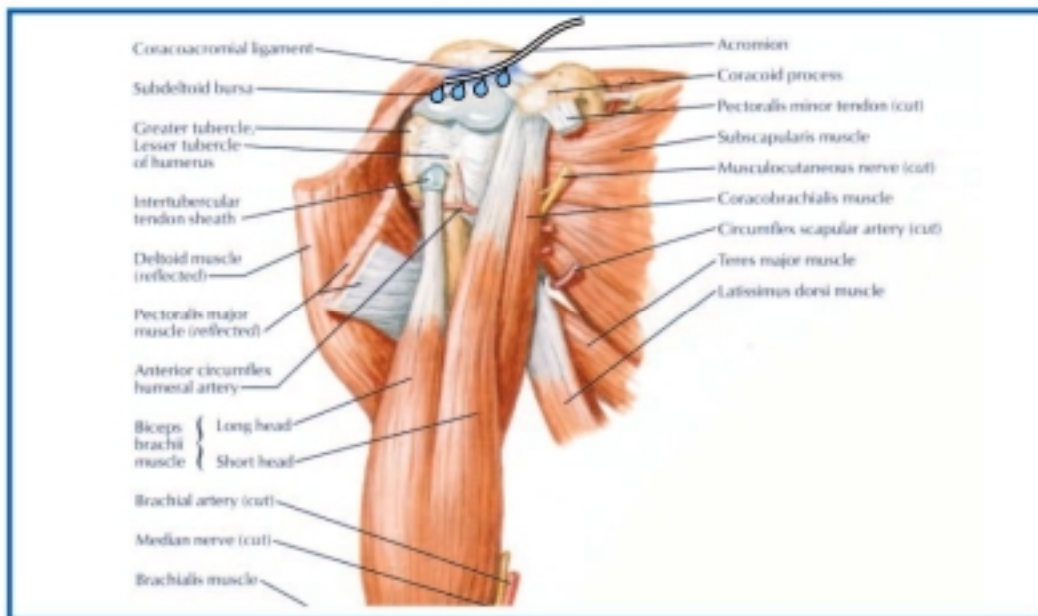
### Cautions:

- Medications used with this system should be administered in accordance with instructions provided by the drug manufacturer. Surgeon is responsible for prescribing drug based on each patient's clinical status.
- Refer to ON-Q Directions for Use for full instructions on using the ON-Q System.

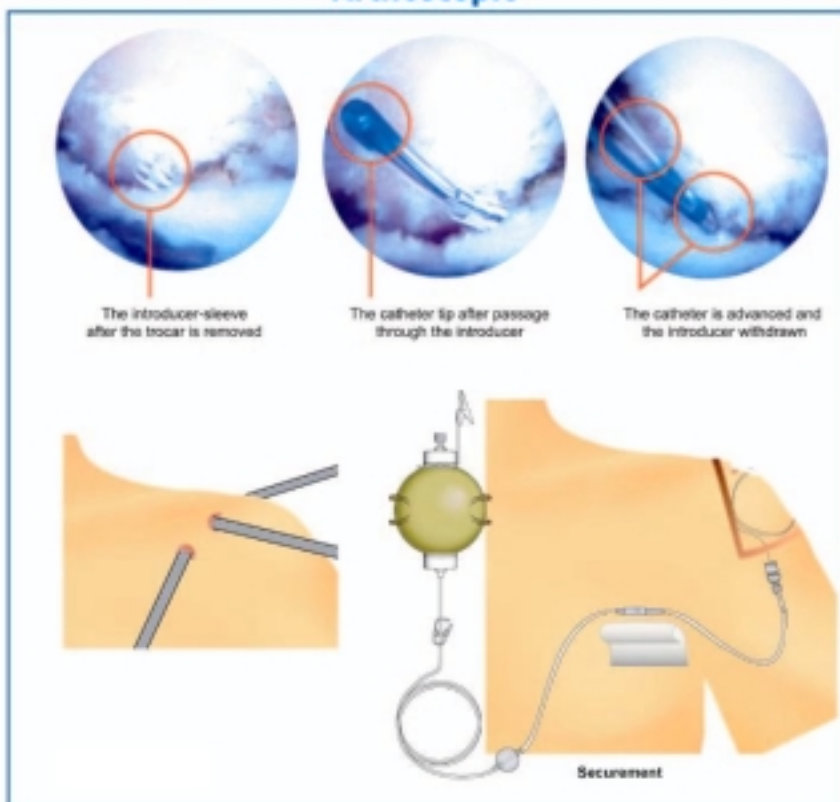
## Rotator Cuff Repair

These illustrations are for general guidance only and not intended to be interpreted as precise anatomical illustrations.

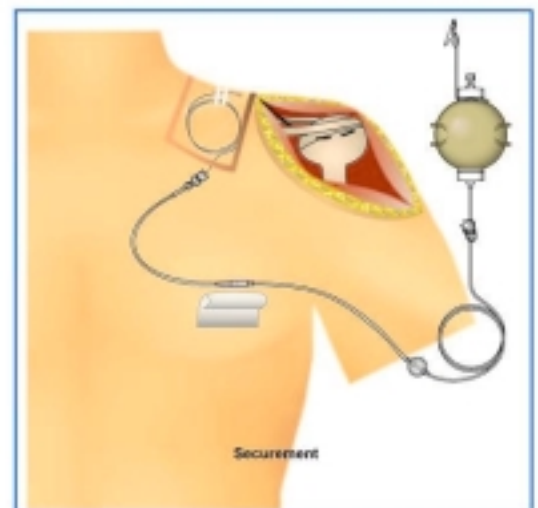
### Placement



### Arthroscopic



### Anterolateral Stab Incision



© ON-Q is a registered trademark of I-Flow Corporation

